

EXISTING LEGEND

- 500--- EXISTING CONTOUR
- EXISTING FENCE
- LEGAL RIGHT-OF-WAY
- EDGE OF PAVEMENT
- FLOODWAY
- FLOODPLAIN
- PROPERTY LINE
- EDGE OF GRAVEL
- S --- EXISTING SEWER
- W --- EXISTING WATER
- E --- EXISTING ELECTRIC
- UTILITY POLE

PROPOSED LEGEND

- 500--- PROPOSED CONTOUR
- RR TRACK TO BE REMOVED
- RR TRACK TO REMAIN
- S --- PROPOSED SEWER
- W --- PROPOSED WATER
- E --- PROPOSED ELECTRIC
- PROPOSED LIGHT POLE

PROPOSED CONDITIONS

PRELIMINARY/FINAL DESIGN OF:
PINE CREEK RAIL TRAIL EXTENSION TRAILHEAD PROJECT
 TIOGA COUNTY COMMISSIONERS
 BOROUGH OF WELLSBORO, TIOGA COUNTY, PENNSYLVANIA

SCALE



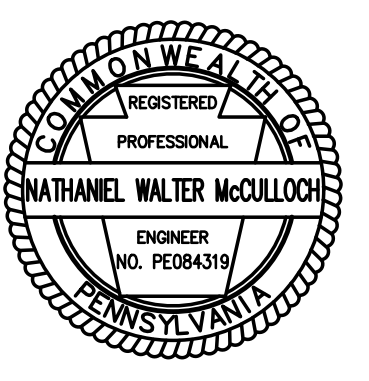
Date: JULY 2022

Design: MKB

Drawing: MKB

Checked: NWMc

Sheet: 4 OF 5



Tuesday, August 09, 2022 - 3:50pm EST F:\Projects\TIOGA\3 - MCG South_PE\CADD\Final_Trailhead_LD_Plans\Plan.dwg

Engineering Services By:
WILSON CONSULTING GROUP
 CIVIL ENGINEERING + PLANNING
 100 OLD SCHOOLHOUSE LANE MECHANICSBURG, PA 17055
 www.WilsonEP.com 717.591.3070



Seal	Date

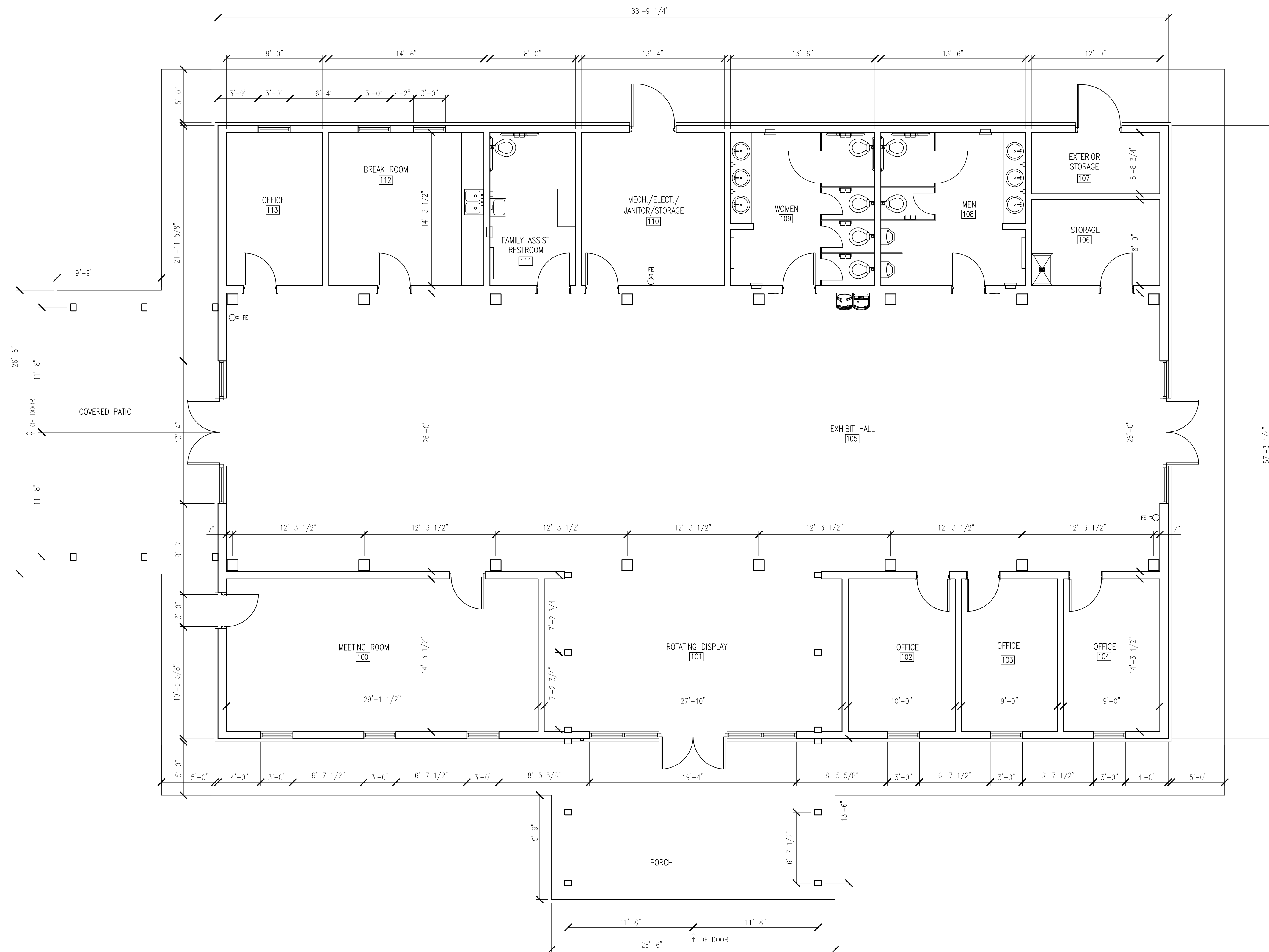
No.	Revisions	Date

Scale: 1/8" = 1'-0"
 Date: JUNE 2022
 Drawn By: JRS
 Checked By: JRS
 Project No.: 034-18-016 (8757)
 File No.:

EADS ARCHITECTS INC.
 ENGINEERING ARCHITECTURE and DESIGN SERVICES
 AN EADS GROUP COMPANY
 WITH OFFICES IN:
 ALTOONA, PA.
 CLARION, PA.
 SOMERSET, PA.
 LEWISTOWN, PA.
 PITTSBURGH, PA.
 SOMERSET, PA.
 CUMBERLAND, MD.
 450 ABERDEEN DRIVE
 SOMERSET, PA. 15501
 Phone: 814-445-2470
 www.eadsgrp.com

County of Tioga
 Marsh Creek Greenway Patterson Trailhead
 Facility
 Tioga County, Pennsylvania
 Perspectives

Drawing No.
A4.2



FLOOR PLAN
SCALE: 3/16" = 1'-0"



FOR REVIEW
NOT FOR CONSTRUCTION
DATE: 12/21/2022

NOTE: DO NOT SCALE DRAWING
IT IS THE RESPONSIBILITY OF EACH CONTRACTOR AND
SUBCONTRACTOR TO VERIFY ALL EXISTING CONDITIONS
AND ALL DIMENSIONS PRIOR TO BIDDING AND BEFORE
BEGINNING ANY WORK. EACH CONTRACTOR IS TO FULLY
COORDINATE HIS WORK WITH THAT OF OTHER TRADES.
REFER TO THE CONTRACT AND SPECIFICATIONS FOR
ADDITIONAL REQUIREMENTS.

Seal	Date

No.	Revisions	Date

Scale	AS NOTED
Date	JANUARY 2023
Drawn By	BEF
Checked By	JRS
Project No.	0341-18-616 (8/17)
File No.	Floor Plans

EADS ARCHITECTS INC.
AN EADS GROUP COMPANY

450 ABERDEEN DRIVE
SOMERSET, PA. 15501
Phone: 814-445-6551
Fax: 814-443-2746
www.eadsgroup.com

WILKESVILLE
ALTOONA, PA.
JOHNSTOWN, PA.
PITTSBURGH, PA.
SOMERSET, PA.
CUMBERLAND, MD.

COUNTY OF TIoga
PATTERSON TRAILHEAD FACILITY
34 FELLOWS AVENUE
WELLSBORO, PENNSYLVANIA 16901
FLOOR PLAN

Drawing No.
A-1